

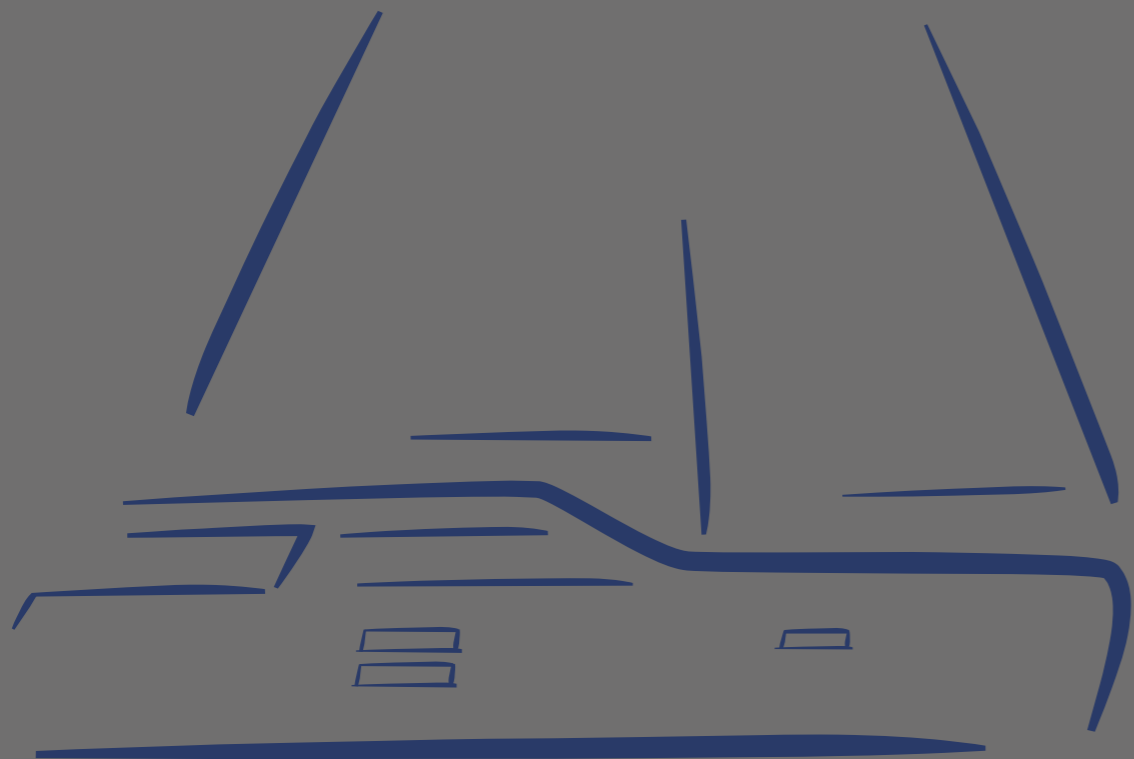


Moody

Decksaloon 41



ONE-level living. TOP-level sailing.



Absolute Moody style

The unique design immediately captivates the observer. It embodies lifestyle, freedom, elegance. It conveys a pioneering spirit and the adventure of bluewater sailing. A promise that the Moody DS41 delivers with every nautical mile.



Quality of life, all-weather capability, generous volumes. Moody's DS yachts maximise the opportunities offered by the deck saloon concept with charismatic elegance. The Moody DS41 achieves all this despite its compact 41ft length – including the carefree feeling of one-level living.

A TRUE DECKSALOON
YACHT IN 41 FOOT.
WITH EVERYTHING
THAT MAKES UP THE
MOODY WAY OF LIFE

Even from a distance, the DS41 has the aura of an original. From every angle, she presents the unique silhouette of Moody Decksaloon yachts.

Her lines embody modern sportiness. The striking vertical bow, the gentle reverse sheer – all this reveals her dynamic character. The hull windows display the clean geometry typical of a Moody.

The sweeping line of the deck saloon runs aft in long struts that support the sun awning. Never has seaworthiness looked more exciting.



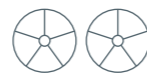


There are so many unforgettable experiences to be had on the only true deck saloon yachts. But the greatest moment on a Moody is to sail her single-handed, thanks to the technically superior but simple sailing characteristics.

The jib runs on a self-tacking track. Lines, sheets and halyards are led under the deck to both helm positions. Electric winches as standard save muscle power. In addition to the furling jib and furling genoa, in-mast furling for the mainsail can be installed on request. This is sailing as it should always be.



85.8m² maximum sail area give the 41-foot yacht enormous performance potential.



Twin rudders controlled from a raised helm position. Two independent systems with two gearboxes.



Extra-stiff hull with chines to increase buoyancy and stabilise the hull when heeling.



Moody believes sailing comfort is also determined by the ease with which you can react to changing wind conditions. That is why the double forestay is one of the countless equipment options.

BEST ENGINEERING. EASY HANDLING. STRONG PERFORMANCE If anything can surprise you at sea, it's the impressive performance of the DS41! A high rig in combination with the 85.8m² sail area offers the best conditions for sporty sailing. Enjoy every nautical mile with the Moody DS41.



The Moody DS41 deliberately does without a third cabin. It is a temporary home – here you want to feel the space. That way, there's plenty of room for those all-important extra items. Even down to the tankage, where 470lt of fresh water is more than enough for a longer passage.

Going to sea in luxurious comfort is the best way to leave the comforts of home. Add an unforgettable chapter to your life story: bluewater cruising aboard the Moody DS41.

Take a break from normal life. Bid farewell to the everyday. Long passages offshore take on a fascination of their own. A bluewater cruise offers the greatest independence that can still be experienced in the modern world.

The Moody DS41 was designed to bring this experience to life. One-level living, walkaround side decks, the low-slung, well-protected cockpit: everything is designed so you can stay on deck, even in rough weather. Designed using the latest methods, the coachroof with its robust safety glass withstands enormous physical forces.

LEAVE THE COMFORTS OF THE EVERYDAY. LET THE MOODY DS41 SAIL YOU INTO A UNIQUE, NEW COMFORT ZONE.





Makes you smile brighter

The sea and its shores provide the backdrop. The deck of the Moody DS41 provides the comfort.
Let it entice you into savouring every moment.



Spacious, intelligently divided sunpad with adjustable headrest



The Moody DS41 shows its elegance in many ways. Such as the ease with which one can move across the deck, even when the elements rage.

Moody's trademark Walkaround Deck is obstacle free, while you can always find an intuitive grip on the stable, welded stainless steel railing.

TIME TO RELAX.
ON EVERY HEADING.
IN ANY WEATHER.

The upper shrouds are attached to the bulwarks, the lower shrouds to the coachroof. You can walk between them in perfect comfort – to reach the foredeck sun terrace, for instance.

Here the whole family at once will find enough lounging space to soak up the sun. The forward part of the lounge can be converted into a bench seat, as can the space on the anchor locker. In no time at all, you have an additional seating area on deck.





It always turns into a story about freedom when a Moody owner talks about their yacht. For them, sailing means realising a unique lifestyle. Creating a world in which only one's own standards count.

EMBODY THE
VALUES OF QUALITY,
INDIVIDUALITY AND
PIONEERING SPIRIT
WITH YOUR MOODY.

Such people naturally find their way to Moody, a boat-builder that has remained true to its quest for perfection since 1827. One that eschews fashions to follow its own vision, where values such as quality, individuality and a pioneering spirit are non-negotiable.

At the helm of a Moody DS41, you live these values. Wherever you appear with the boat, you make a confident statement, whether a weekend in coastal waters or an offshore adventure.



Bathing platform with masterfully laid teak and ergonomically shaped bathing ladder

Living on one level

The stepless transition from cockpit to deckhouse is unique in sailing yacht design. Only those who sail on a Moody DS41 experience one-level living in its purest form every day.



Sailors always seek that sense of boundlessness. They find it aboard the Moody DS41 – regardless of the weather. Large panes of glass form the deckhouse all round, conveying a unique feeling of space. Walls are hardly noticeable, as light and fresh air flood the saloon.

Up to 6 people can sit together at the U-shaped sofa, directly opposite the longitudinal galley. Every culinary wish can be fulfilled, because the walk-in storage space under the floor can hold copious provisions. Technical refinements are also smartly integrated, such as the dishwasher hidden under the sofa.

PUSH-AND-SLIDE
PATIO DOOR CLEVERLY
BRINGS TWO WORLDS
TOGETHER.

At the front of the deck saloon, surrounded by glass, is a navigation centre with autopilot. If it gets inhospitable outside, you can keep the boat on course from inside. From here, you can still admire the magnificent panorama in the company of the rest of the crew.

As soon as possible, every sailor is drawn back outdoors. The push-and-slide door glides silently to the side, giving step-free access to the cockpit as if it were an extension of the saloon.



- | Sunlit deck saloon with clean panoramic views
- | Unrivalled headroom
- | Temperature regulating safety glass
- | High-level appliances, including optional dishwasher
- | Navigation centre with autopilot and throttle, both optional



Toast the picturesque anchorage with a sundowner. Or invite a few guests for an elaborate meal with harbour ambience. The cockpit of the Moody DS41 provides all the space you could wish for. In a moment, the tabletops of immaculately crafted teak unfold to offer an enormous surface area. It's time to enjoy yourself.

Neither midday sun nor rain can disturb your relaxation, as the bimini protects the entire cockpit area. The high freeboard gives the softly upholstered backrests a comfortable height, while huge stowage spaces are hidden under the benches. This is where you can keep those special extras you don't want to be without— such as bicycles for the whole crew.

With the Moody DS41, everything happens in the ultimate comfort - even cooling off in the sea. Swimming gear is ready and waiting in the lazarette between the helm stations. Lower the elegantly finished bathing platform, glide into the water from the ergonomic stainless steel ladder, and you're off.






Luxury accelerated

Specifications are more than abstract numbers on the Moody DS41. They impressively reveal just how much sailing passion and cruising comfort can be found in a 41-foot yacht.



LOA	12.52m	41'1"	CE Certificate	A - 10
LWL	11.42m	37'6"	Mast height above WL	19.90m 65'4"
Beam	4.20m	13'9"	Main	48.20m ² 519sq ft
Draft	1.85m	6'1"	Jib	37.60m ² 405sq ft
Displacement	11.20t	24,692lb	Total sail area	85.80m ² 924sq ft
Ballast	3.13t	6,900lb	Rig	I 16.8m 55'1"
Engine standard	42kW	57hp Diesel	J	4.7m 15'5"
Engine option	59kW	80hp Diesel	P	16.2m 53'2"
Fresh water	475lt	125gal	E	5.5m 18'1"
Fuel tank	210lt	56gal	Design	Dixon Yacht Design
			Interior	Hanse Design Team



Home, suite home

A day of luxury on a Moody yacht lasts the full 24 hours. Time spent below decks is every bit as refined as that spent on deck during the day.



It is not only in the deck saloon that limits fade away. A multitude of windows creates this atmosphere in the owner's cabin as well – you can't get any closer to the sea and sun below deck.

Let your eyes wander over the visual highlights here. Fine leather, precious wood trims, surfaces that refract the light with their refined textures. And at the very centre of it all is the queen-size island bed, representing the personal wellbeing of the owner.

At times it's hard to believe you really are aboard a 41-footer. The three-wing wardrobe with interior

lighting is more reminiscent of the luxury reserved for much larger sailing yachts.

The stylistic language of the interior continues in the ensuite bathroom. Here, the cabinets reflect the colour palette of the owner's cabin, the lighting is placed with pinpoint accuracy and the fittings are designer.



Large island double berth framed by five windows and a skylight



Ensuite bathroom with separate shower cubicle and illuminated cabinet

Everywhere on the Moody DS41 you'll find headroom of 1.90m. It's a figure that reveals a lot about the yacht: nothing but the best for the crew at every turn.

The guest cabin also sets new standards in comfort and brightness, where long, double hull lights bring sunlight into every corner. The wardrobe is spacious enough for all your outfits, and other accessories can be stowed in nooks alongside the berths.



Choice of berths

On request, a double guest berth can be fitted instead of two single berths.



Fully equipped guest bathroom

with shower, WC and washbasin. Shower with fold-out partition.



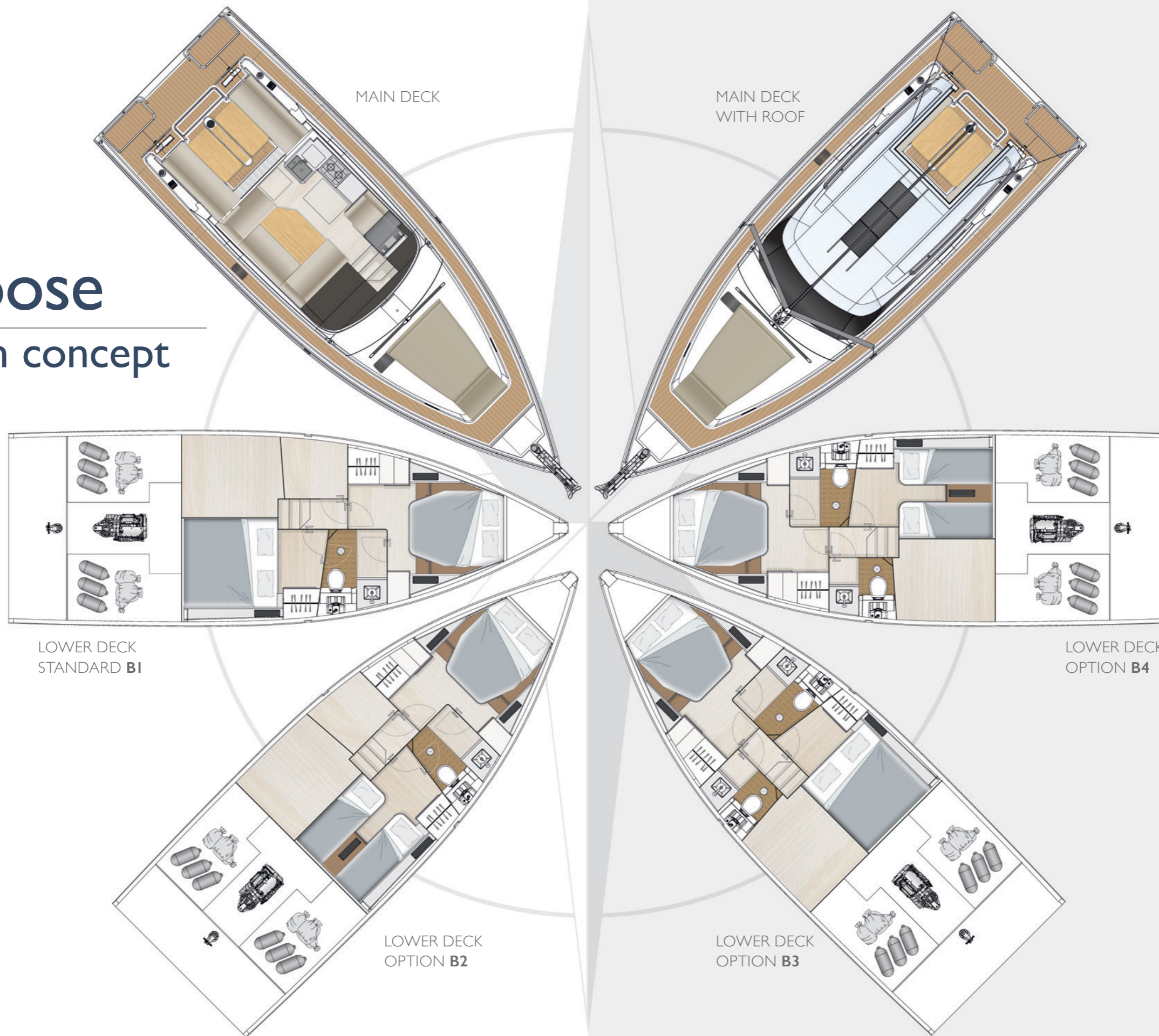
The volume below deck gives you the choice of two layouts. To offer guests maximum privacy, midships storage to port can be converted into a second bathroom. Naturally, it is fully equipped with a washbasin, shower, WC and smartly divided cupboard.

For maximum flexibility, we recommend configuring it as a storage space for spare sails or provisions on long passages. Whatever you need on board, the Moody DS41 has room for it.

In this way, the cabin layout suits your priorities. Realise your very own vision of sailing on the Moody DS41!



Choose your cabin concept



Lower deck Standard B1
 | Luxurious guest cabin with spacious double berth
 | Separate storage space amidships for additional sails, bicycles or provisions

Lower deck B2
 | Luxurious guest cabin with twin berths and bedside table
 | Separate storage space amidships for additional sails, bicycles or provisions

Lower deck B3
 | Master cabin with exclusive ensuite bathroom
 | Luxurious guest cabin with spacious double berth
 | Fully equipped guest bathroom with shower, washbasin and WC

Lower deck B4
 | Master cabin with exclusive ensuite bathroom
 | Luxurious guest cabin with twin berths and bedside table
 | Fully equipped guest bathroom with shower, washbasin and WC



Moody Custom Collection

Combine exquisite materials with elegant colours. Determine the sailing characteristics from the sailcloth to the keel. Configure your on-board technology, including the engine, sound system and navigation instruments.

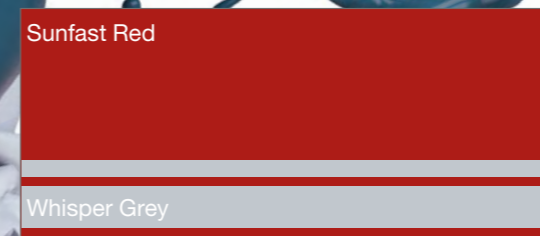
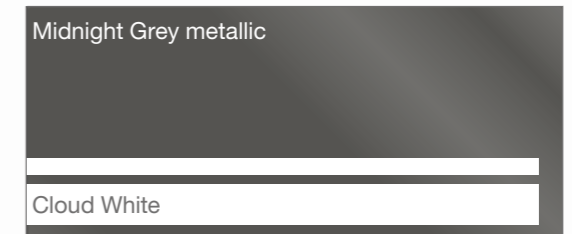
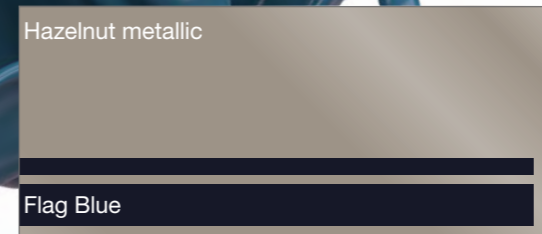
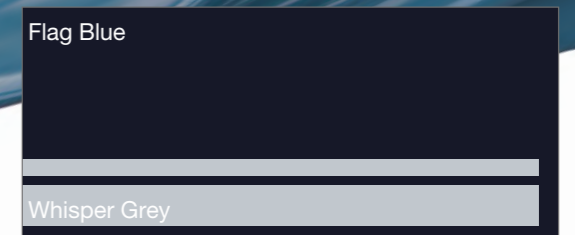
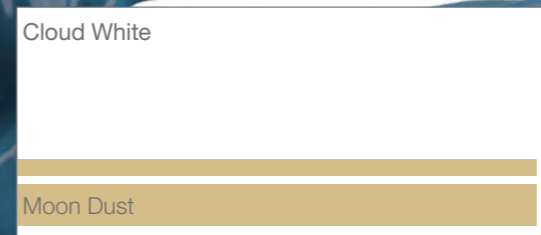
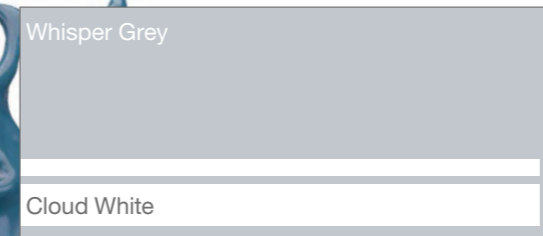
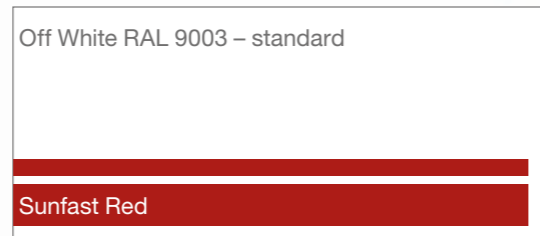
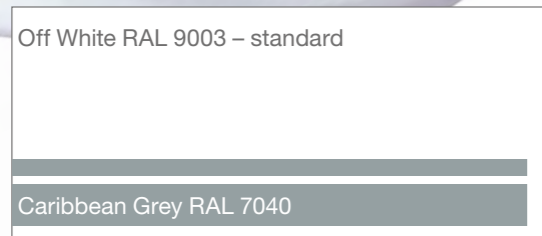
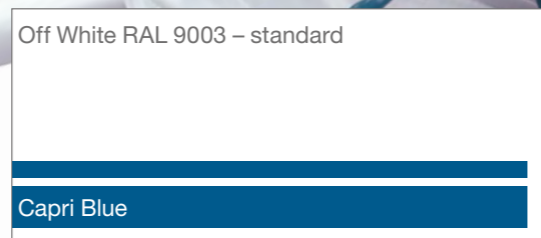
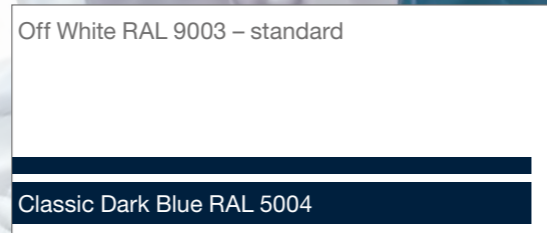
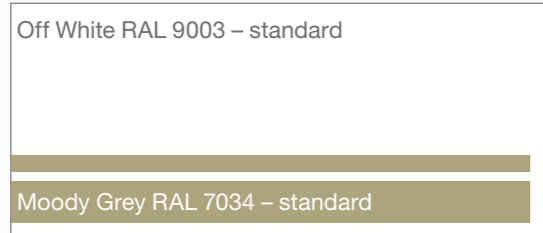
Hull Colours

Your taste is what matters

Just consider the colours below as an initial inspiration. The hull and waterline of your Moody Yacht can be painted in almost any colour from the ALEXSEAL Yacht Coatings selection. Please ask your dealer.

hull & waterline / painted colours

hull & waterline / gelcoat colours



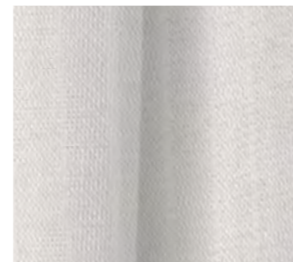
Finest Fabrics

Create your individual home

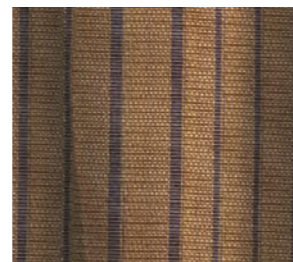
Moody customises the interior to match all your wishes. Immerse yourself in our versatile world of premium fabrics and textures. Your dealer will be happy to show you the entire palette.



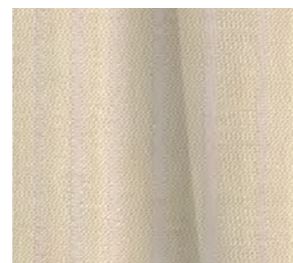
curtains elvis



White



Gold



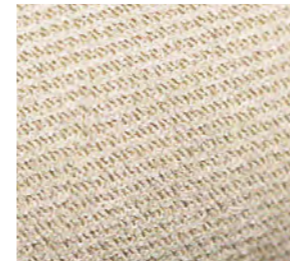
Cream



Red

saloon, sofa & navigator's seat upholstery

oxford



Cream - standard



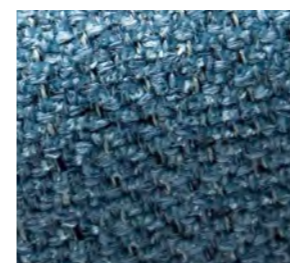
Taupe



Silver



Stone

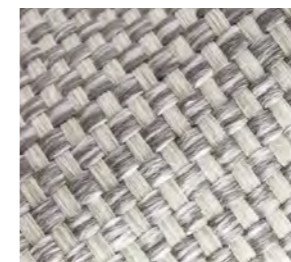


Denim

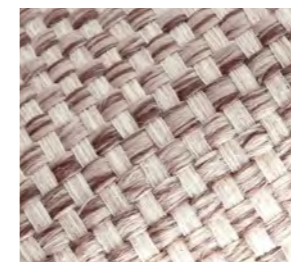
devon



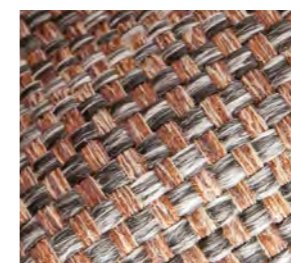
Cliffside - standard



Glacier



Oyster

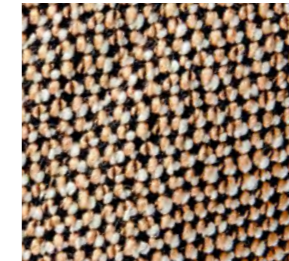


Muscat

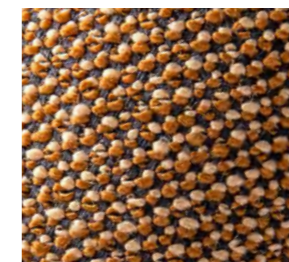


Graphite

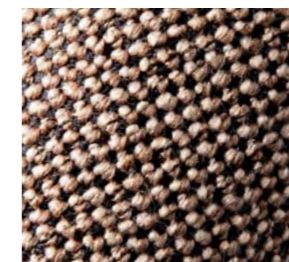
orkney



Almond



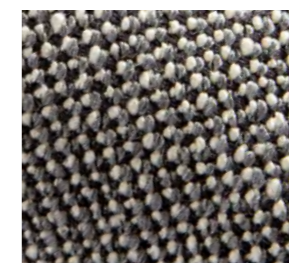
Bronze



Rock Island



Black Truffle



Husky

yorkshire leather



Ivory



Clay



Dark Mud



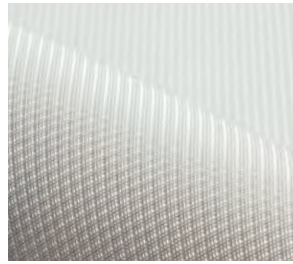
Basalt



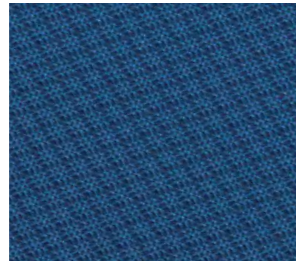
Dark Brown

cockpit & sunbed cushions

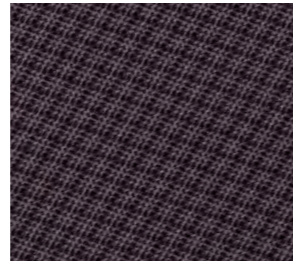
diamante



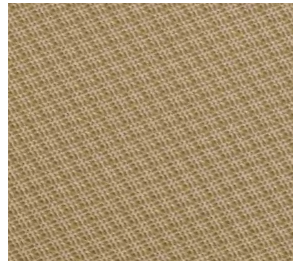
Snow



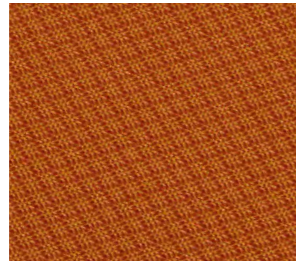
Regatta



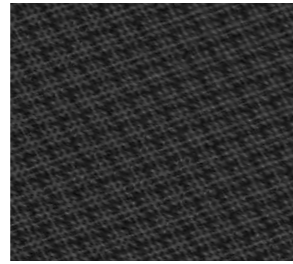
Grapey



Taupe

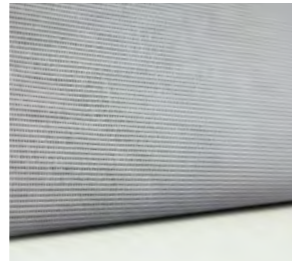


Sunset

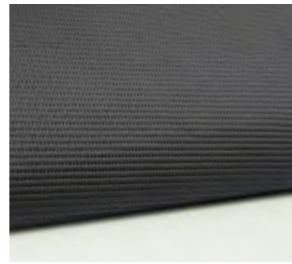


Carbon

windscreen covers



Grey



Black

Exterior Upholstery

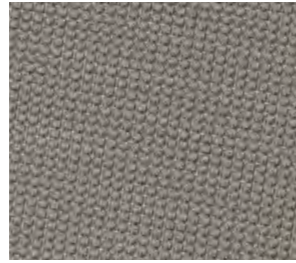
Style it your way

Design your Moody DS41 to be a masterpiece of personal expression. For instance, you can choose upholstery for the cockpit and sun lounge whose colour is in perfect harmony with the hull – or opt to create a striking contrast.

vogue



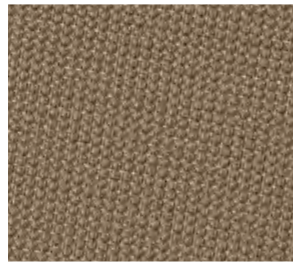
Eucalyptus



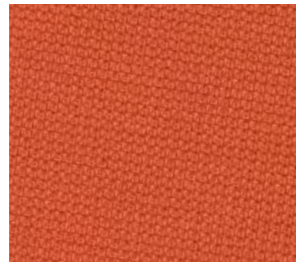
Earth



Nickel



Mushroom



Apricot

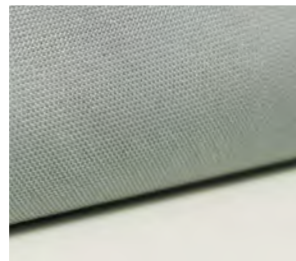


Denim

steering wheel cover & bimini



Cream



Light Grey



Dark Grey



Selected Woods

Luxurious look for interior and exterior

Moody is genuine quality with no compromise. Only premium woods are handcrafted into the elegant surfaces. Thrill to the look and touch of these surfaces. You can feel the difference every time you walk barefoot on the teak deck or slide your hand over our finely crafted joinery.

interior
flooring woods



New Zealand Acacia – standard

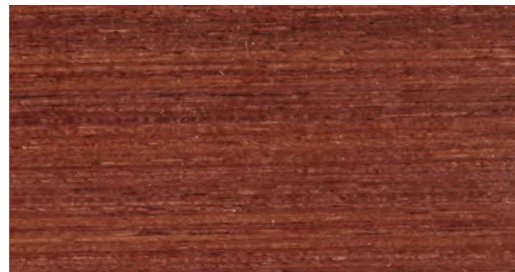


Continental Oak



Traditional Stripes

interior
furniture woods



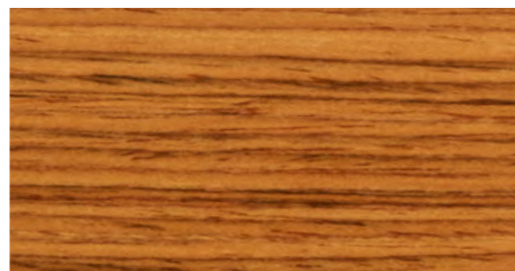
Traditional Mahogany – satin varnish – standard



Traditional Mahogany – high gloss varnish



Golden Oak



Teak

exterior
woods



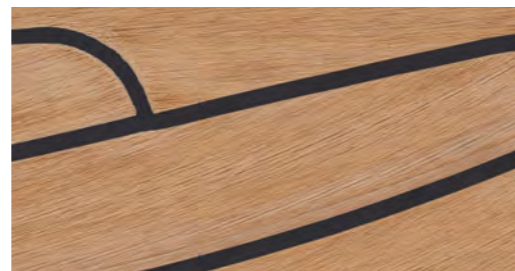
Scrubbed White



Scrubbed Grey



Teak Grey



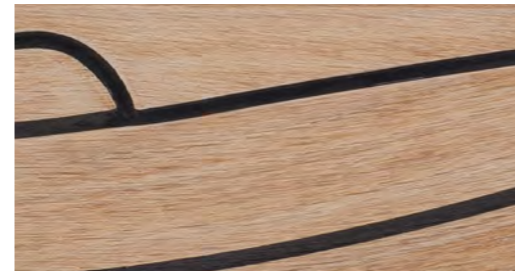
Teak Black



Wheathered White



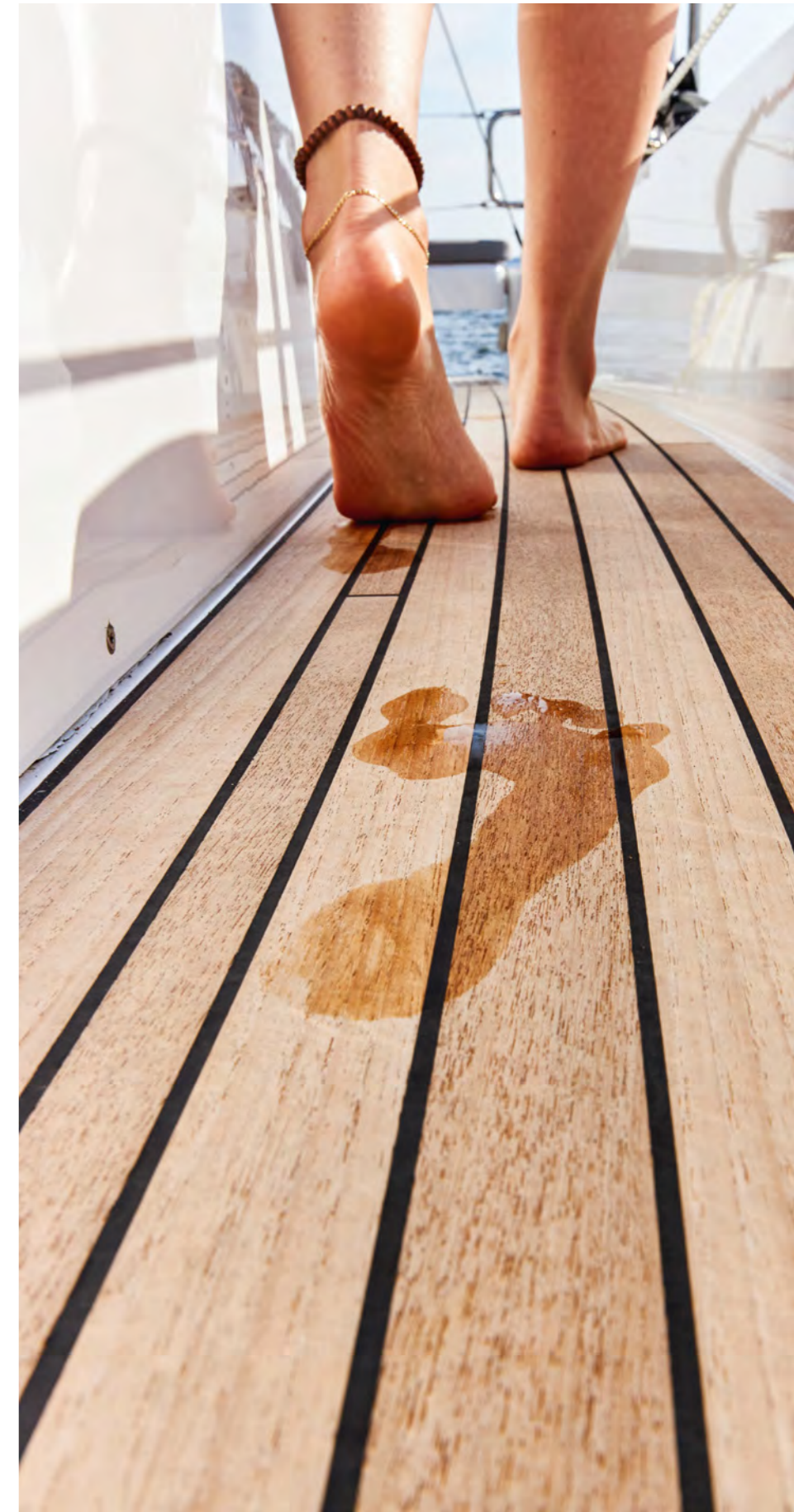
Wheathered Black



Scrubbed Black

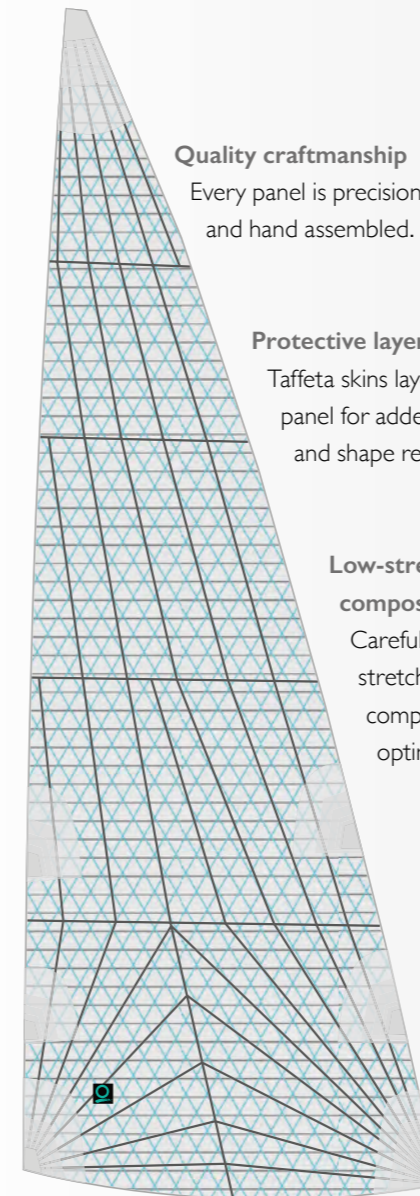


Teak White



Concept Sails

By Quantum for Moody Yachts



Quality craftsmanship

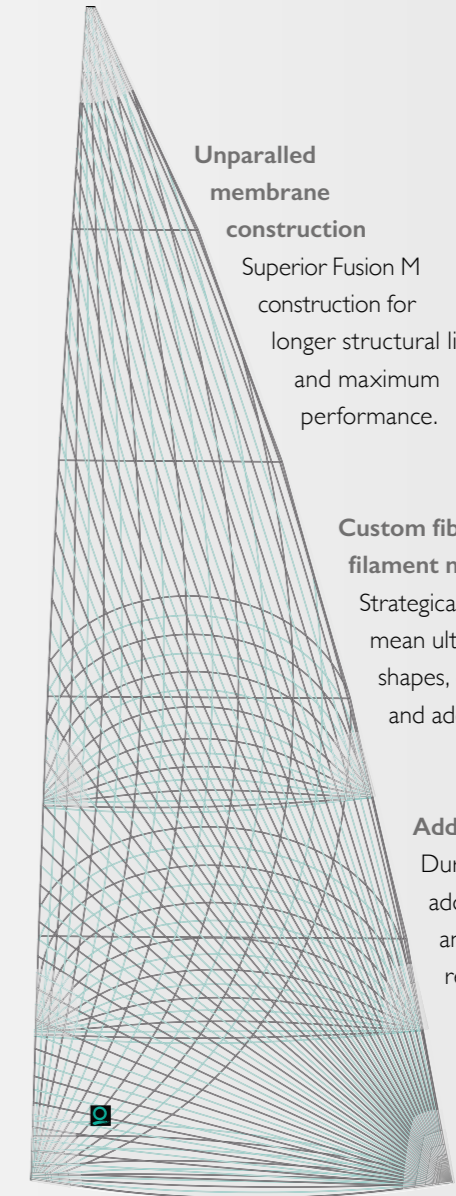
Every panel is precision cut and hand assembled.

Protective layer

Taffeta skins layer each panel for added durability and shape retention.

Low-stretch composite panels

Carefully mapped stretch-resistant polyester composite panels for optimal performance.



Unparalleled membrane construction

Superior Fusion M construction for longer structural life and maximum performance.

Custom fibre & filament matrix

Strategically run fibers mean ultimate sail shapes, ease of trim, and added strength.

Added protection

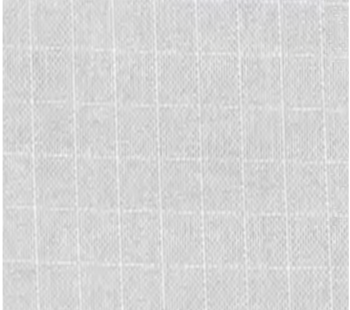
Durable taffeta skins add structural integrity and enhance shape retention.

Fueled by the best sailors, sailmakers and designers in the world and comprehensive data and insights from every project they've worked on – from super yachts to dinghies – Quantum developed their unprecedented iQ Technology. The result is a custom sail engineered to achieve the perfect shapes that, simply put, give you confidence through control and ease of use for the best experience on the water time and time again.

Gennaker Look

Colour your life

Increase your sailing performance and send a colourful signal at the same time.
Our selection of gennakers ranges from discreet to very eye-catching hues.



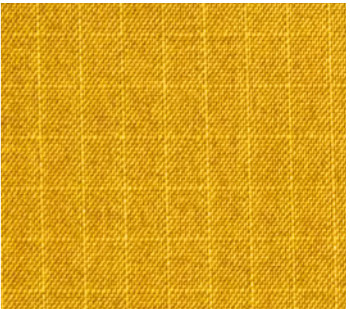
Natural



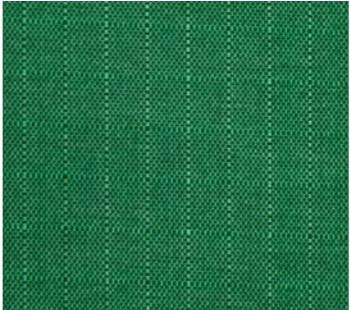
Grey



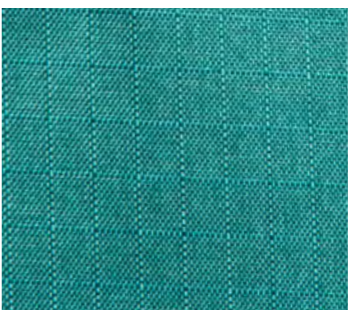
Light blue



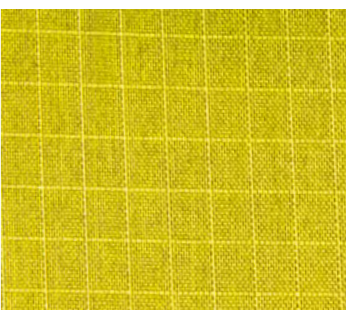
Coast gold



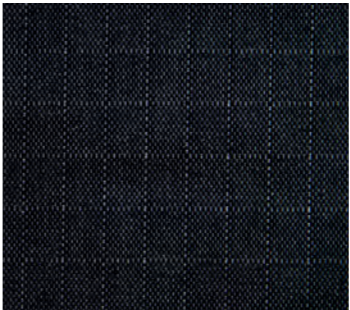
Green



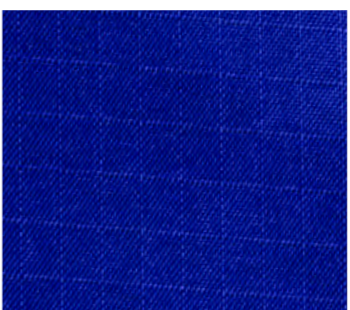
Ocean blue



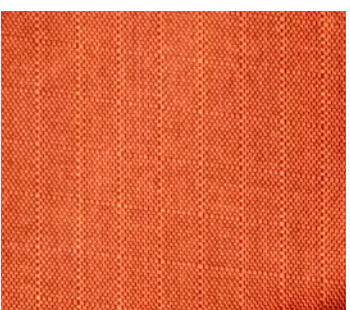
Yellow



Black



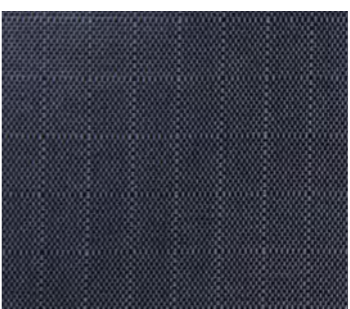
Dark blue



Orange



Purple



Navy

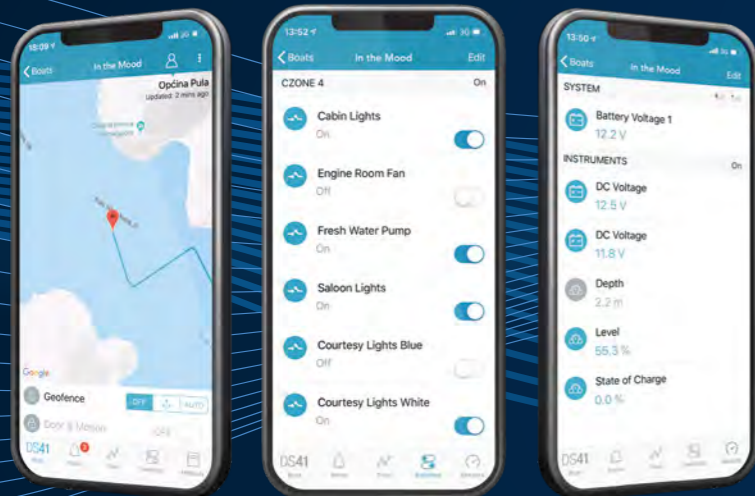


Red

Moody Connect

Be smart, be intelligent and up to date

Everyone is talking about the digital future. But Moody is implementing it – with the first cloud-based telematics system for series production sailing yachts. You can access your boat's technical data and functions live via the mobile app or via the owner's area at www.moodyboats.com. Intelligent functions such as BoatMonitoring, eLogbook and eServicebook enable you to keep an automatic logbook, stay on top of all servicing dates and monitor your yacht seamlessly.



-  **Sensors**
Real-time monitoring of battery levels and devices.
-  **Switch Control**
Control of lighting and electrical devices (optional).
-  **Alerts**
Notifications for battery, bilge, shore power, anchor, geo fencing and more.
-  **Trips**
Electronic logbook with archive and share function for social media platforms.
-  **Report Issue**
Direct contact to the dealer.
-  **Maintenance**
Push notifications before due dates for maintenance of all components.
-  **Shop & Parts**
Feature for ordering equipment, supplies and spare parts.
-  **Manuals**
and operating instructions for all units and components on board.
-  **Insurance**
Exclusive in-app offers and conclusion of all insurances around the boat by Pantaenius.

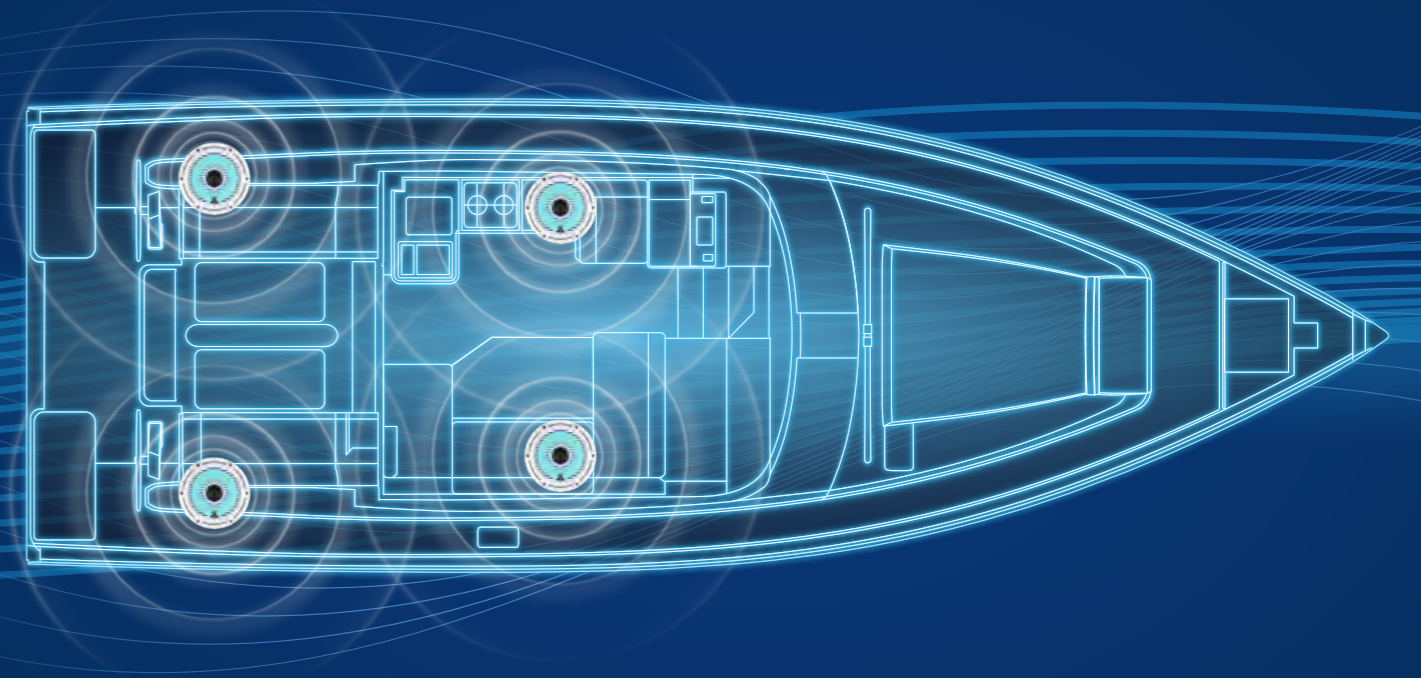
MyMoody Safety Cloud

The MyMoody Safety Cloud enables real-time monitoring of your Moody: anytime, anywhere, simply via the app. Protect your precious yacht remotely, as if you lived on board. You can organise maintenance and service with unprecedented ease. Thanks to the electronic logbook, a smartphone is all you need to share your sailing experiences with others. In short: this system will add a whole new dimension to your sailing passion.*

MyMoody Sound Theatre

High-end sound meets high-class living

Your first impression: brilliance. Even the finest acoustic nuances are brought out. Two pairs of loudspeakers – one in the cockpit, one in the saloon – overwhelm your ears with their outstanding clarity. Simplicity is the second thing you'll notice. We've brought the design and operation of the system back to the essentials, for intuitive control via the chart plotter or the separate control head. And thirdly, you'll enjoy the thrill of cutting-edge technology. The system is wireless, very compact and almost limitlessly flexible. This is the connectivity of the future.



JL Entertainment Package:

Remote
JL Audio MMR-40

Audio Head Unit
JL Audio MM 50 BE
with bluetooth

Control via
B&G Zeus³ 7"
chart plotter

Speakers
2 x 2 JL Audio
speakers



An aerial photograph of a white sailboat with a tall mast and rigging, floating on a deep blue lake. The boat is positioned in the lower right quadrant of the frame. In the background, a small island with a mix of green grass and dense forest is visible, surrounded by the water. The water's surface shows subtle ripples and some lighter patches, possibly due to shallow depths or submerged vegetation. The overall scene is serene and scenic.

Welcome on board

The second you first set foot on board, the Moody DS41 reveals her charm.
Contact your dealer to experience this moment yourself.

This brochure is not contractual. The yachts depicted partly comprise special equipment not included in the standard scope of supply. Illustrations may not correspond with current versions. Subject to alterations in design and equipment without notice and errors excepted. Renderings: Dixon Yacht Design, Print: Eggers Druck, Design: smz GmbH

