

DS54

 Moody®



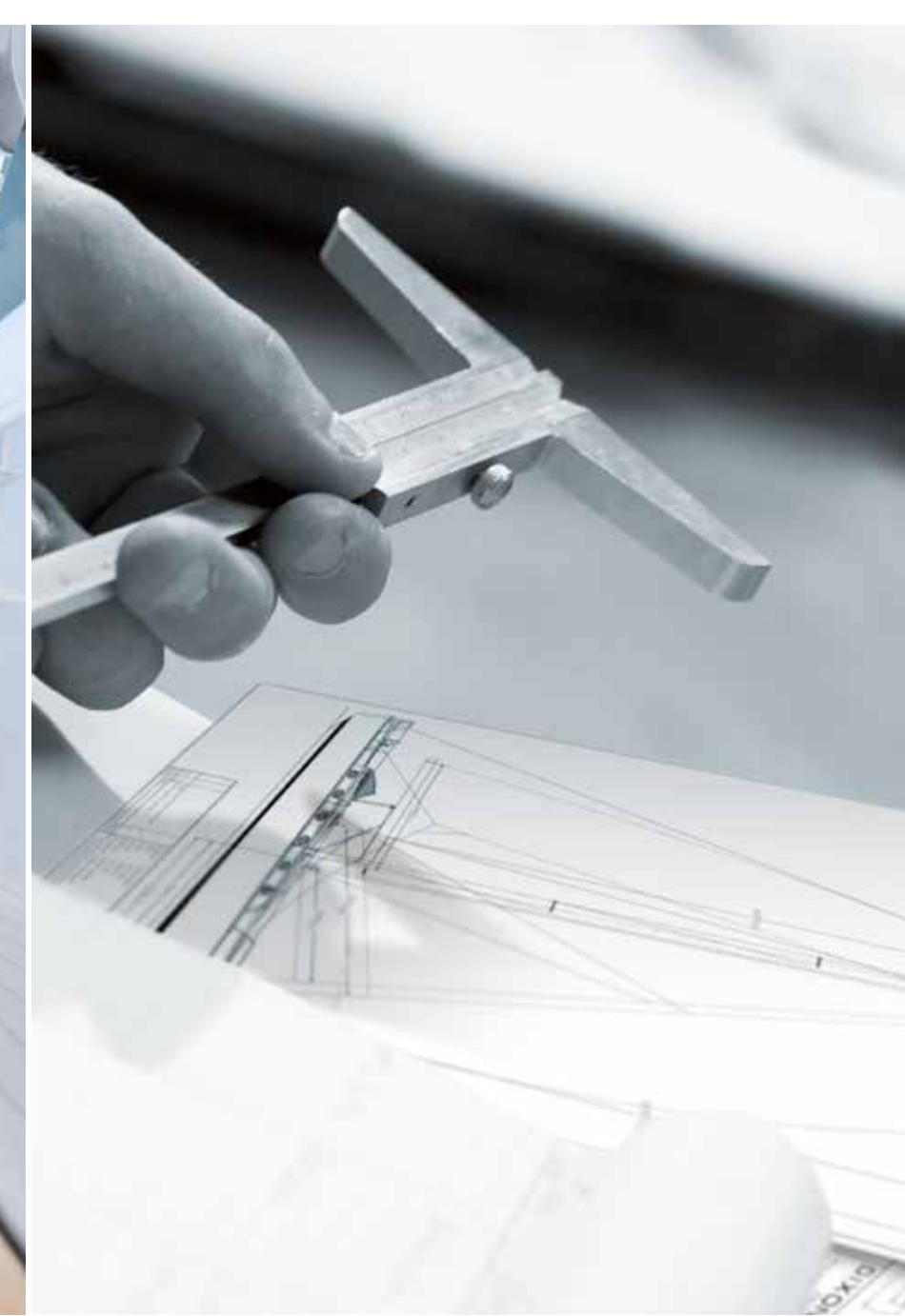
living on one level  
& luxurious comfort



easy handling &  
perfect control



safety &  
seaworthiness



handcrafted quality  
& high-tech



The Moody deck saloon 'one level living' concept takes a unique approach to modern yacht design. Simply open the sliding doors and you'll enjoy a panoramic view from the living area and the spacious cockpit on the same level. The combination of the large cockpit with a cockpit table as standard and open afterdeck is ideal for spending time with family and friends. Welcome aboard.



living on one level  
& luxurious comfort

living on one level  
& luxurious comfort



Spacious stowage for dinghy or swimming equipment



Opening the bimini top creates a large space flooded with sunlight



Preciously furnished owners cabin with luxurious ambience



Roomy saloon with navigation table and 360° view

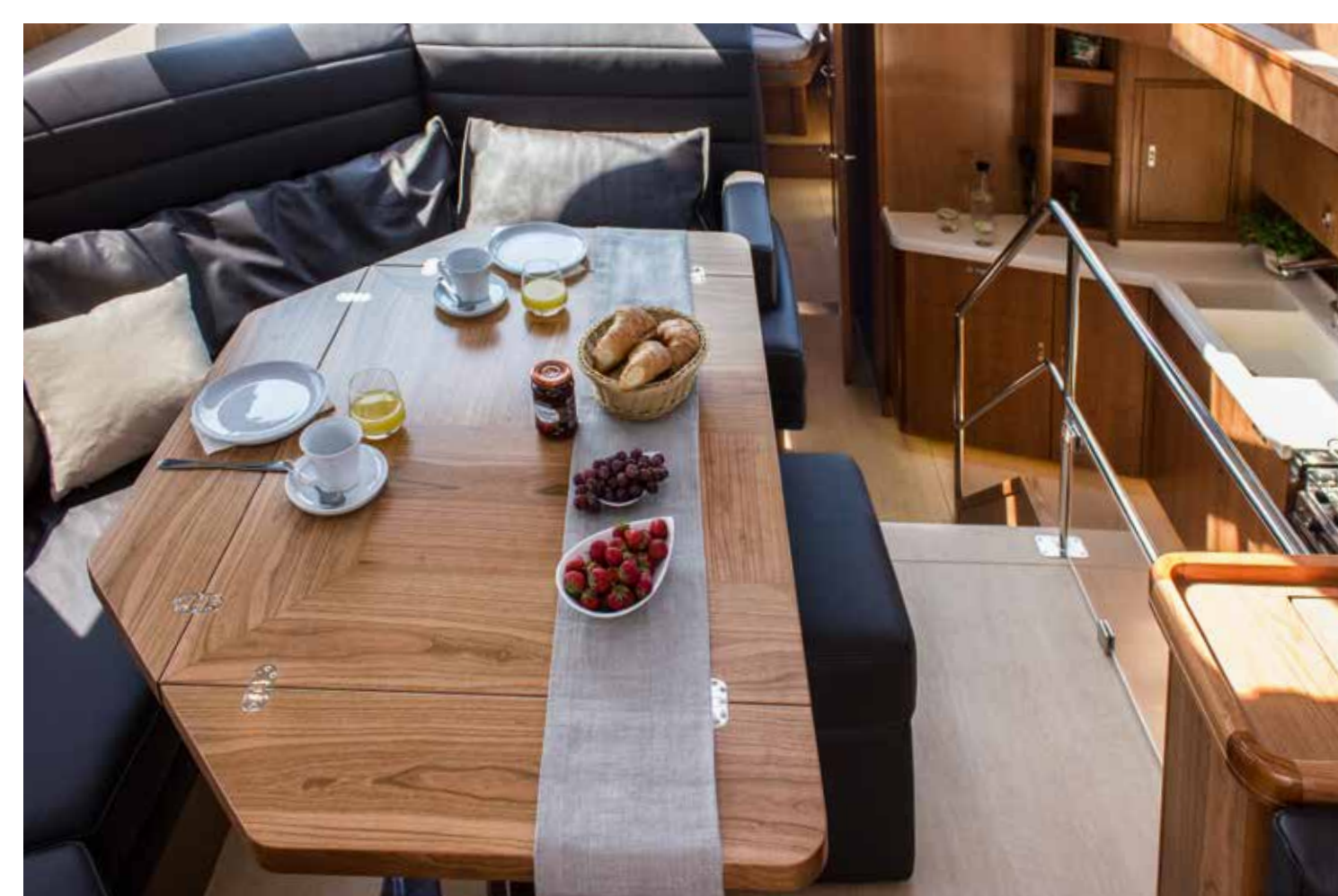


Galley and saloon share the stunning 360° panoramic view



Shower area en-suite to both guest cabins

living on one level  
& luxurious comfort



Those who prefer a cooking area separated from the saloon choose the cabin concept with a large galley down. This version offers more working space and stowage room. Moreover, it allows for so much daylight it doesn't feel like being down in the hull. No matter which kind of galley you like better: It will be provided with every convenience you expect from a fully-equipped house kitchen. All working tops are made of CORIAN®. This premium surface combines high performance with outstanding aesthetics. It is noted for seamless appearance and stunning effects of colour and translucency.

living on one level  
& luxurious comfort





living on one level  
& luxurious comfort





The helmseat is the spot where all threads come together. From the engine to the sails, any part can be controlled by a single helmsman. For long distance sailing it is highly desirable to operate the boat from inside, which can be easily done by the autopilot system in the saloon.



easy handling  
& perfect control

easy handling  
& perfect control



Pushbuttons for electric winches



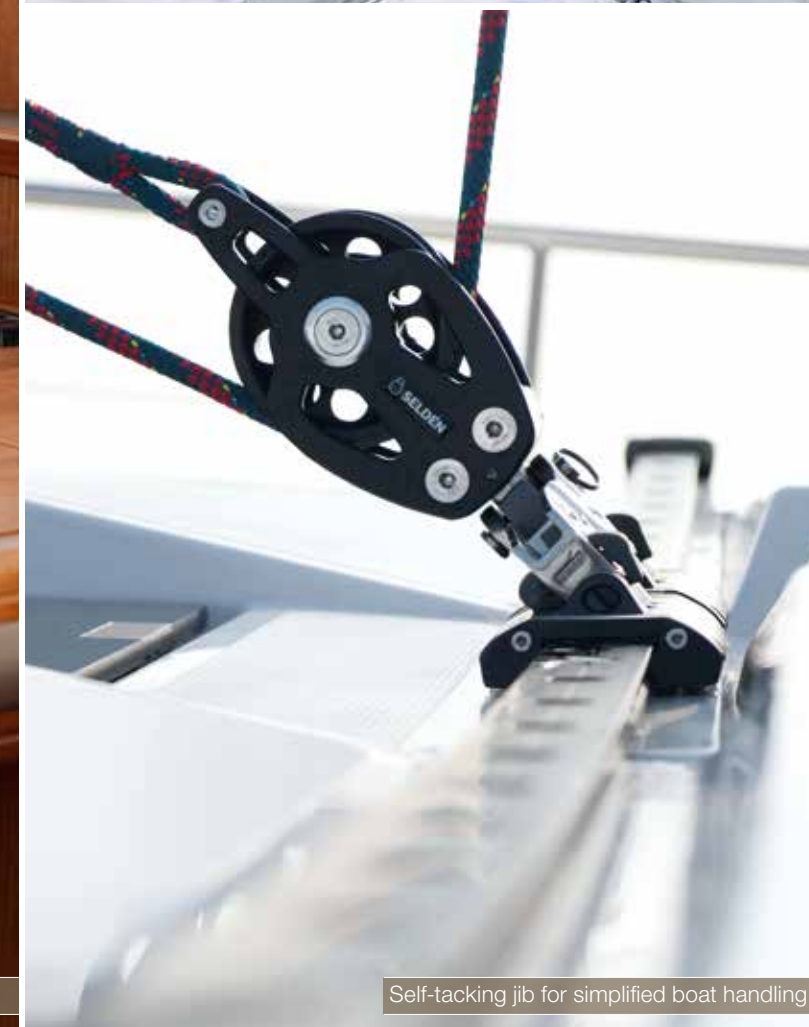
Drive-by-wire technology ensures groundbreaking engine control



Modern autopilot allows steering from inside



Furling mainsail



Self-tacking jib for simplified boat handling



Bow and sternthruster joystick

Aboard the Moody DS54, everyone enjoys the feeling of moving safely. An extra-high bulwark, handles on the saloon roof and the fixed railing give a secure passage along the side deck even if the wheather gets rough. This is particularly appreciated by little boaters like children and animals.



safety &  
seaworthiness




Electric double furlers




Multifunctional helmseat with convertible backrest



Hydraulic bathing platform and gangway

 522 l diesel  
 920 l optional

 766 l water

The Moody DS54 is a true ocean cruising yacht. Her design incorporates a high degree of seaworthiness and independence. Highlights include exceptional refrigeration, water and diesel capacities, a walk-in motor compartment and workshop, a solid watertight bulkhead in the bow and much more besides.

safety & seaworthiness



Railing with integrated ladder



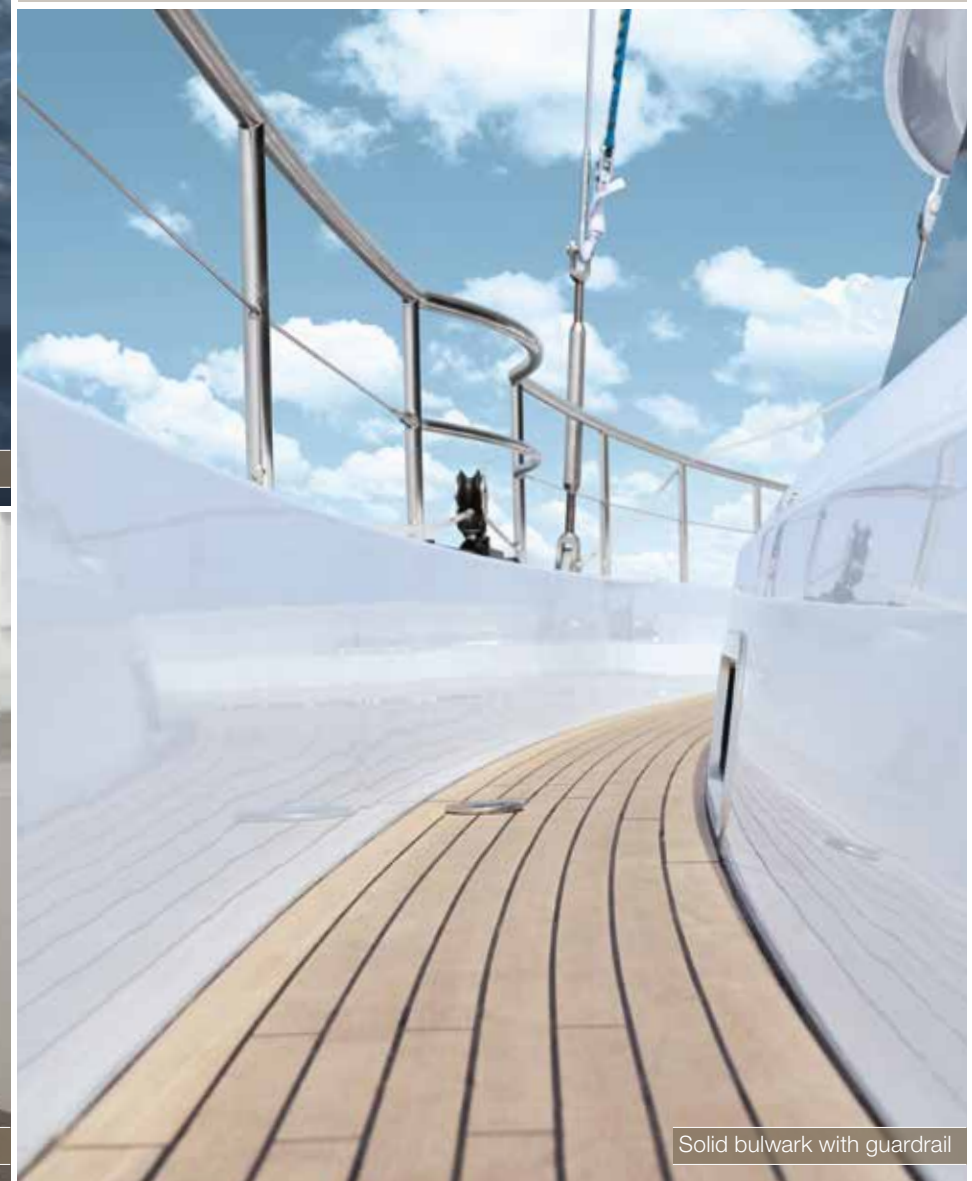
Integrated windlass



Easily accessible storage locker



Solid bulwark with guardrail

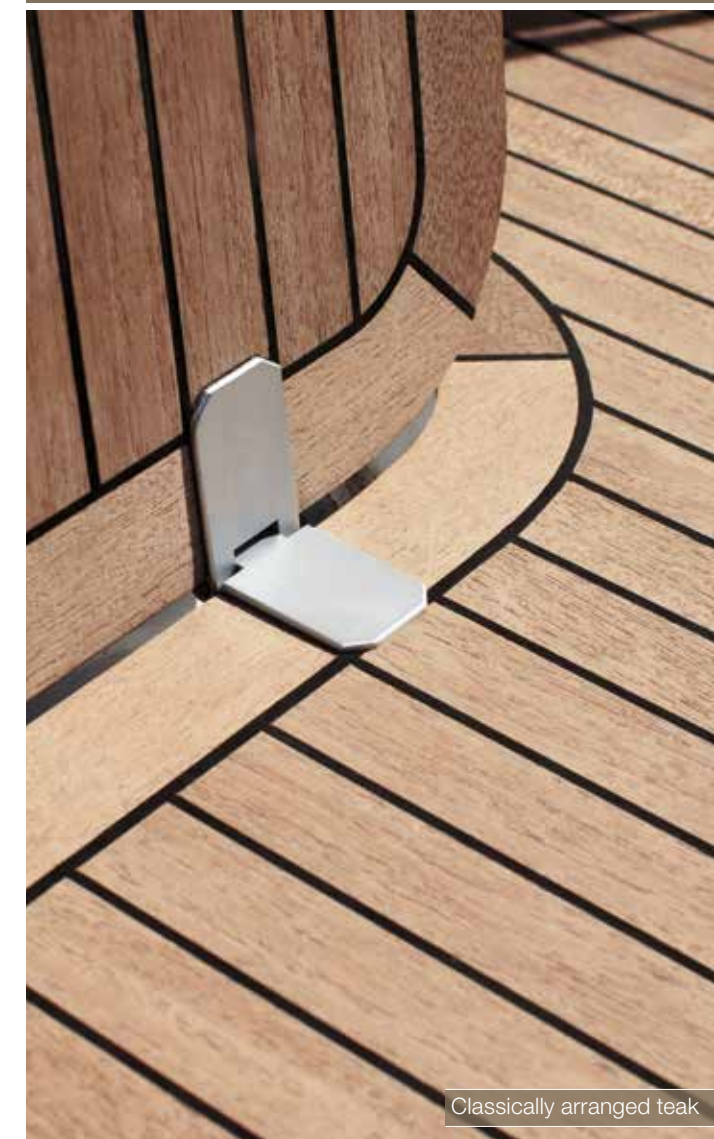


All elements of the Moody DS54 are elaborately manufactured and most precisely fitted. Electronical components, mechanical parts, furniture: Each detail meets the highest standards and serves the intention to make your cruise as comfortable as possible – under any conditions.



handcrafted quality  
& high-tech

handcrafted quality  
& high-tech



Classically arranged teak



Flush metal pushlock



Solid wooden fiddles with textile inlay



Full control at navigation area



Finest furnishing and latest TV-technology for the guests



C-zone Bus-System

By the state-of-the-art BUS-System, the skipper adjusts major technical functions to particular boating situations such as sailing away, being offboard or boating at night. This is easily done by using a single control panel in the hallway.

electronics  
meet design



Fusion high-performance entertainment system

Experience a fine and perfect interior with solid woods plus a classic teak deck where handcrafted solidity meets modern design. The Moody DS54 benefits from an extra-safe construction with strong bulkheads sturdily connected with hand-laid laminates to the hull and deck.

tradition meets  
modernity

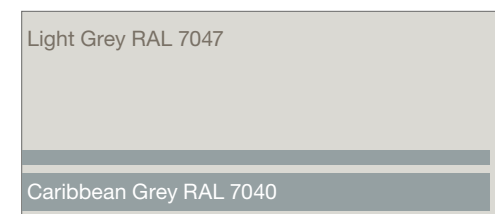
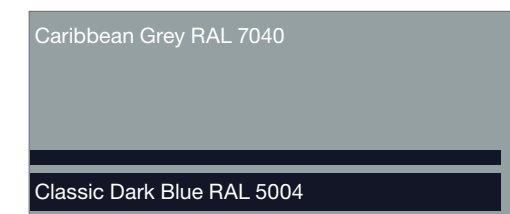
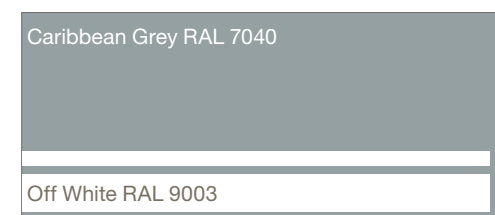
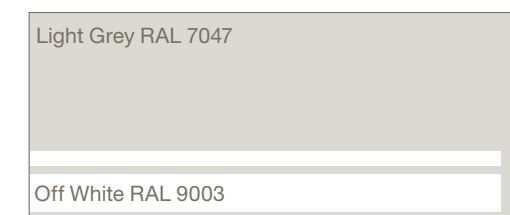
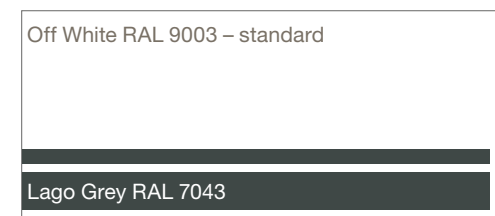
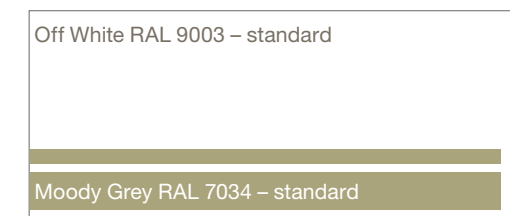


# Hull Colours

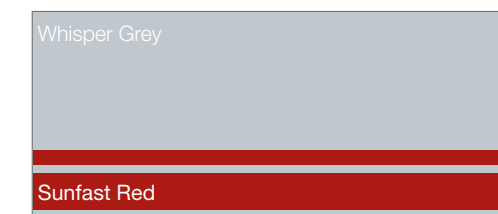
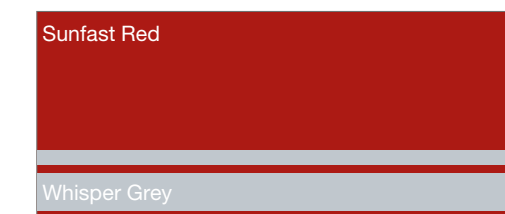
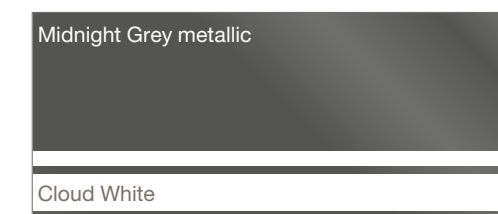
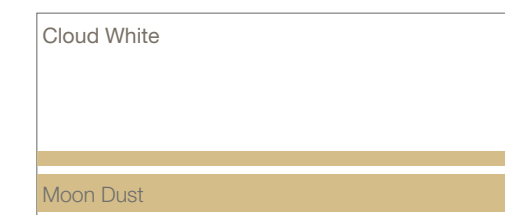
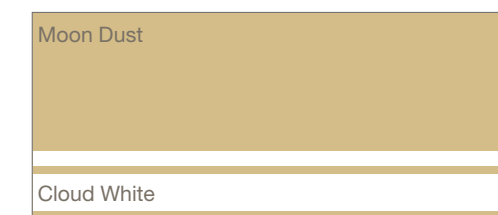
## Your taste is what matters

Just consider the shown colours as an initial inspiration. The hull and waterline of your Moody Yacht can be painted in almost every colour according to the Alexseal Yacht Coatings Selection. Please ask your dealer.

### hull & waterline gelcoat colours



### hull & waterline painted colours





# Finest Fabrics

## Create your individual home

Moody customizes the interior to match all your wishes. Immerse yourself in our versatile world of premium fabrics and textures. Your dealer will be happy to show you the entire palette.



### saloon, sofa & navigators seat upholstery

#### kent



Cream – standard



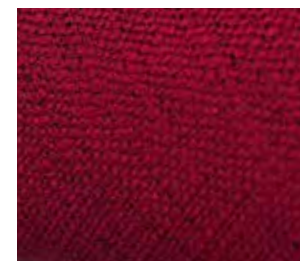
Beige



Light Grey



Dark Blue

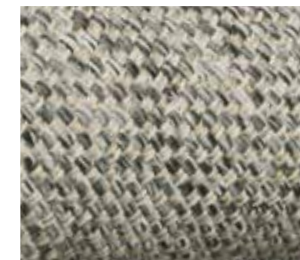


Ruby

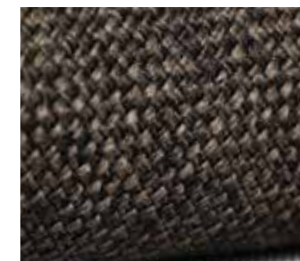
#### devon



Nature



Beige-Melange



Chocolate



Anthracite

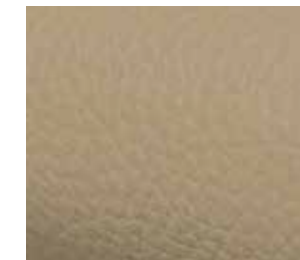


Green

#### yorkshire leather



Ivory



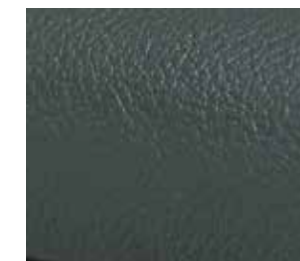
Clay



Dark Brown



Blue



Dark Grey

### carpets



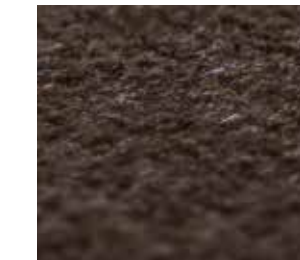
Oyster Pearl



Diamond White



Royal Taupe



Queen's Amber

### curtains

#### elvis



White



Gold



Cream



Red



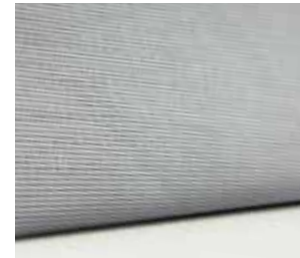


# Exterior Upholstery

## Style it your way

Design your Moody DS54 to be a masterpiece of personal expression. For instance, you can choose upholstery for the cockpit and sun lounge whose colour is in perfect harmony with the hull – or opt to create a striking contrast.

### windscreen covers



Grey



Black

### steering wheel cover & bimini



Cream



Light Grey



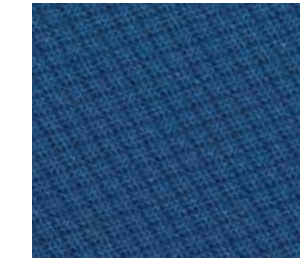
Dark Grey

### cockpit & sunbed cushions

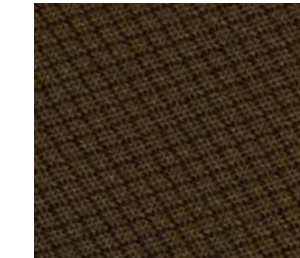
#### diamante



Snow



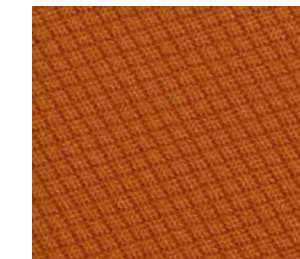
Regatta



Espresso



Taupe



Sunset



Carbon

#### vogue



Eucalyptus



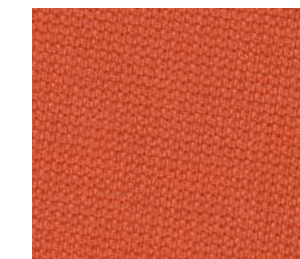
Earth



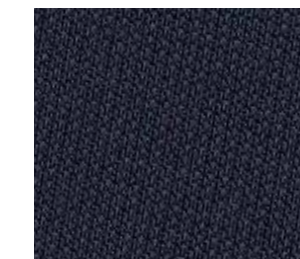
Nickel



Mushroom

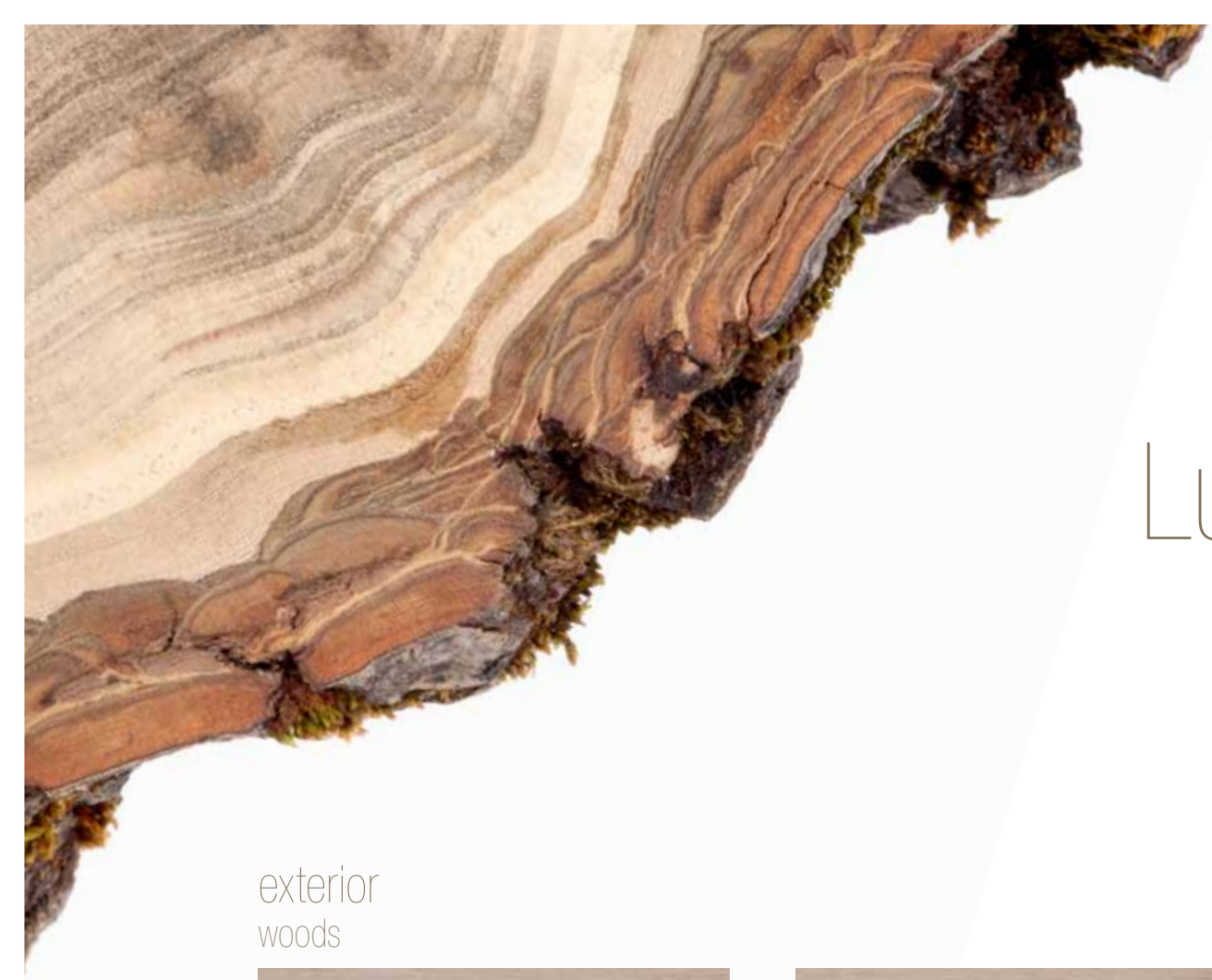


Apricot



Denim





# Selected Woods

## Luxurious look and feel

Moody is genuine quality – no compromises. Only premium woods are handcrafted into the elegant surfaces, which are a pleasure through and through both visually and to the touch. You can feel the difference every time you let your hand gently glide over the material.

### exterior woods



Wheathered White



Wheathered Black



Scrubbed Black



Teak White



Scrubbed White



Scrubbed Grey



Teak Grey



Teak Black

### interior furniture woods



Traditional Mahogany – satin varnish – standard



Golden Oak



Teak

### flooring wood



New Zealand Acacia – standard



Continental Oak



Traditional Stripes



# options



Sunbed on foredeck



Fischer Panda generator with Volvo Penta engine



Hydraulically retractable gangway



Electrically lowerable cockpit table



Second forestay with electrical genoa furler



Dishwasher



Washing machine and dryer



Extra fridge for the owner's favorite bottles



Staying cool below deck in any environmental climate requires a high-quality air conditioning. At your request, we will install a system that offers precise temperature control, long service life and effective energy conservation.

## air condition

## as you like it...

Your individual expectations about the Moody DS54 go beyond what is standard? We will be glad to customize your boat according to your demands. There is plenty of special technical equipment that can be installed. And when it comes to the choice of upholstery and flooring, the sky is the limit.

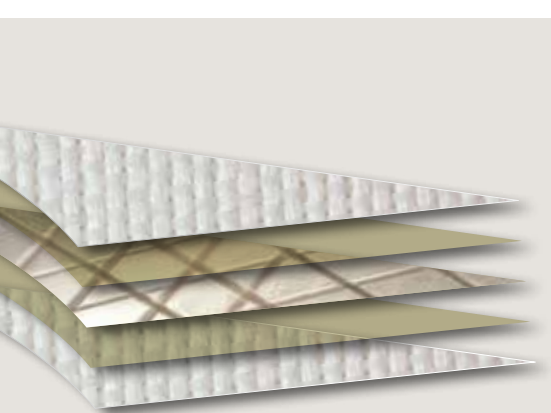


Taffeta: 1,7 oz  
 Double Layer Film  
 Grid Fabric: 6 ends 3000 P/5 picks 500 P  
 Double Layer Film  
 Taffeta: 2,0 oz




ELVSTRØM FCL 5 layer performance trioptimal sails

- increased stability for high performance
- high durability for ambitious cruising
- exclusive design by Jesper Bank for Moody

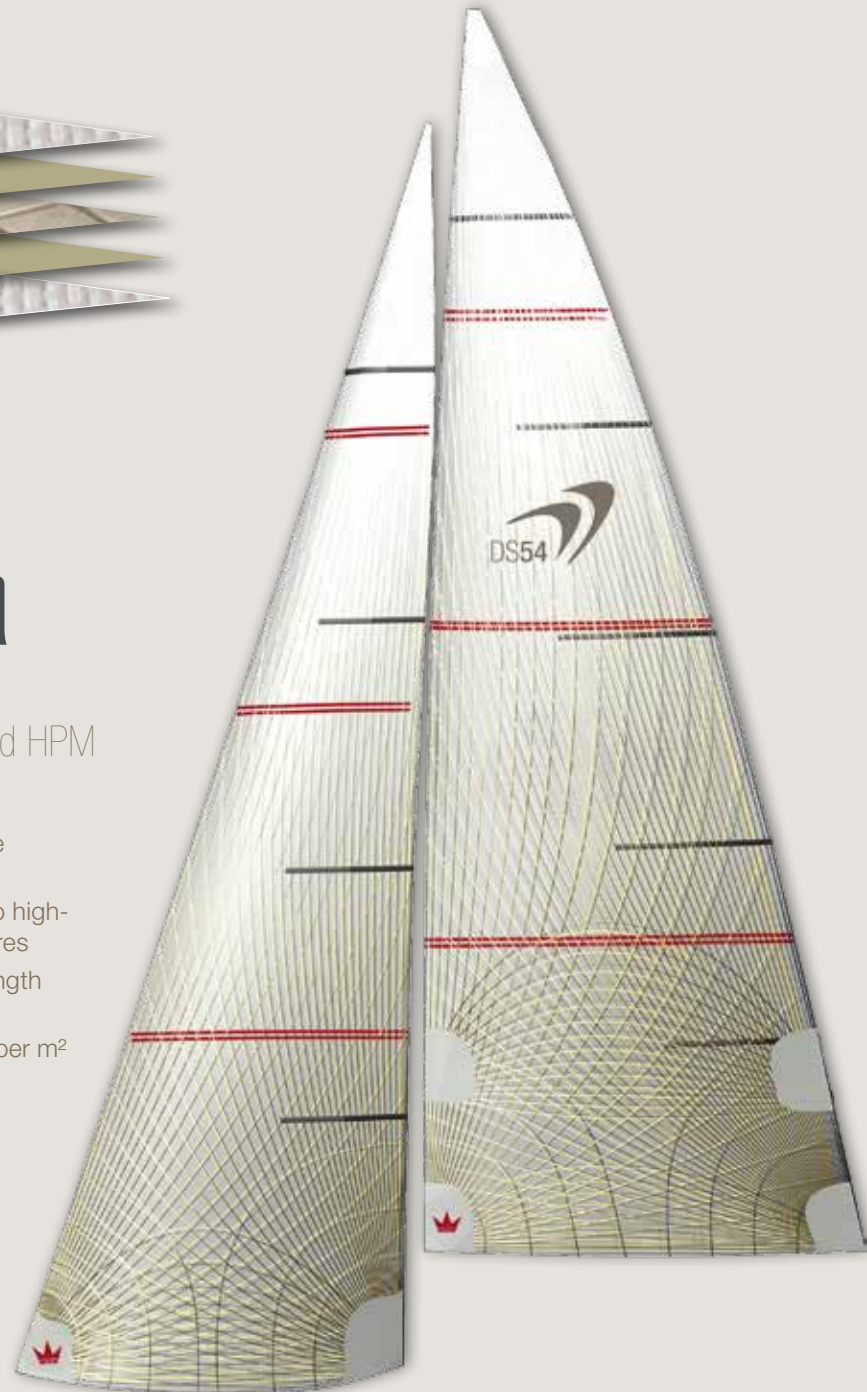



Grey Taffeta: 1,7 oz  
 Double Layer Film  
 Fase: Aramid/Technora  
 Double Layer Film  
 Grey Taffeta: 2,0 oz



ELVSTRØM high-end HPM membrane sails

- high form stability due to optimal membrane
- minimal stretch due to high-strength Technora fibres
- high-mechanical strength using Taffeta
- extremely low weight per m<sup>2</sup>




ELVSTRØM high-end-performance sails



Entertainment Package (owners cabin)

Entertainment Package (guest cabin)



Saloon TV package  
Flat screen, lifting system,  
TV preparation

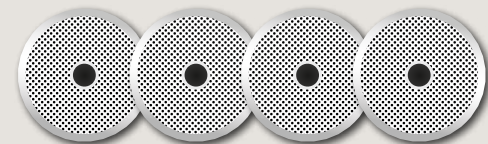
tv package



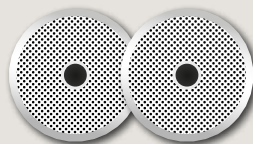
FUSION MS-AV 750 Multimedia radio,  
CD/DVD Player, VHF, AUX, USB incl.  
colour display



FUSION MS-AB206 subwoofer with  
integrated amplifier



4 High-end 2-way speakers  
integrated in headliner



2 High-end 2-way speakers  
in cockpit



FUSION MS-NRX200  
remote control in cockpit

Also included:

WLAN router for connection with portable devices

entertainment package



2 Raymarine i70s multifunction displays, one at each helm position, incl. windtransducer



2 Raymarine Axiom 9" GPS chart plotter, one per helm position



Raymarine Evolution Autopilot  
with p70Rs display



Raymarine 260 VHF incl. handset

Also included:

AIS Class B  
transponder

NMEA engine information  
interface for chartplotter

Antenna splitter for  
VHF and AIS

Raymarine navigation package basic



4 Raymarine i70s multifunction displays, 2 per helm station, incl. transducer



2 Raymarine Axiom 12" GPS chart plotter, one per helm position



Raymarine Evolution Autopilot  
with p70Rs display



Raymarine 260 VHF incl. handset

Also included:

AIS Class B  
transponder

NMEA engine information  
interface for chartplotter

Antenna splitter for  
VHF and AIS

Raymarine package plus

standard  
| One-level-living  
between saloon and  
cockpit with galley up

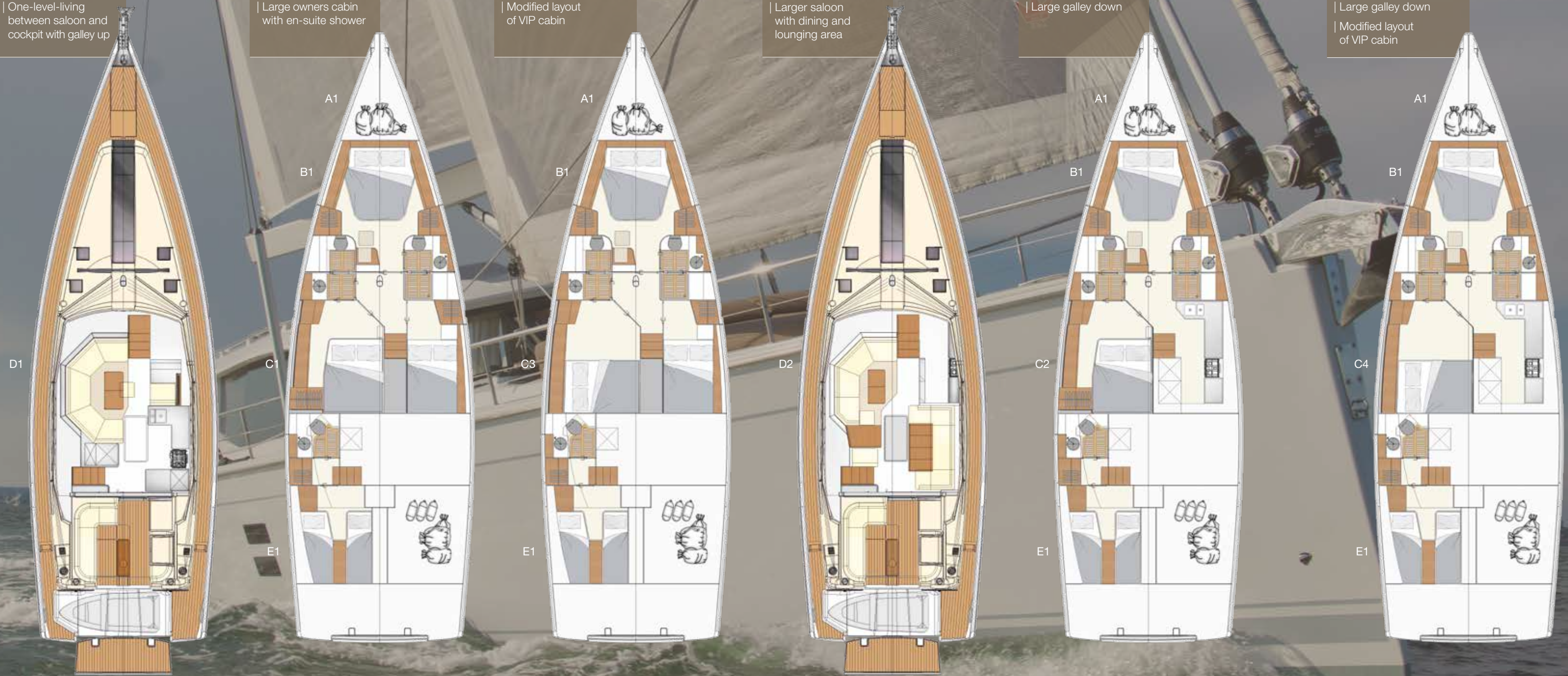
standard  
| Large owners cabin  
with en-suite shower

option  
| Modified layout  
of VIP cabin

option  
| Larger saloon  
with dining and  
lounging area

option  
| Large galley down

option  
| Large galley down  
| Modified layout  
of VIP cabin



# cabin concept & specifications

LOA	17.10 m   56'10"
LWL	15.55 m   51'00"
Beam	5.19 m   17'00"
Draft	medium 2.69 m   8'10" (standard) shallow 2.34 m   7'80" (option)
Displacement	medium 24.70 t   54,454 lbs shallow 24.90 t   54,895 lbs
Ballast	6.38 t   14,059 lbs
Engine	Diesel 110 kW / 150 HP
Fresh water	766 l   202 US gal
Fuel tank	522 l   138 US gal
CE Certificate	A - 12
Mast length above WL	25.22 m   82'90"
Main	80.10 m <sup>2</sup>   862 sq ft
Jib	60.50 m <sup>2</sup>   651 sq ft
Genoa	102.00 m <sup>2</sup>   1,098 sq ft
Genaker	220.80 m <sup>2</sup>   2,377 sq ft
Total sail area	140.60 m <sup>2</sup>   1,513 sq ft
Rig	I 21.41 m   70'30" J 6.40 m   21'00" P 20.70 m   67'11" E 7.10 m   23'40"
Design	Dixon Yacht Design



All measurements and weights are approximate. Specifications, modifications and material can be changed without notice. Errors reserved.



DS54

Moody  
Ladebower Chaussee 11  
D-17493 Greifswald  
[www.moodyboats.com](http://www.moodyboats.com)



 Moody® DS54

 Moody®